

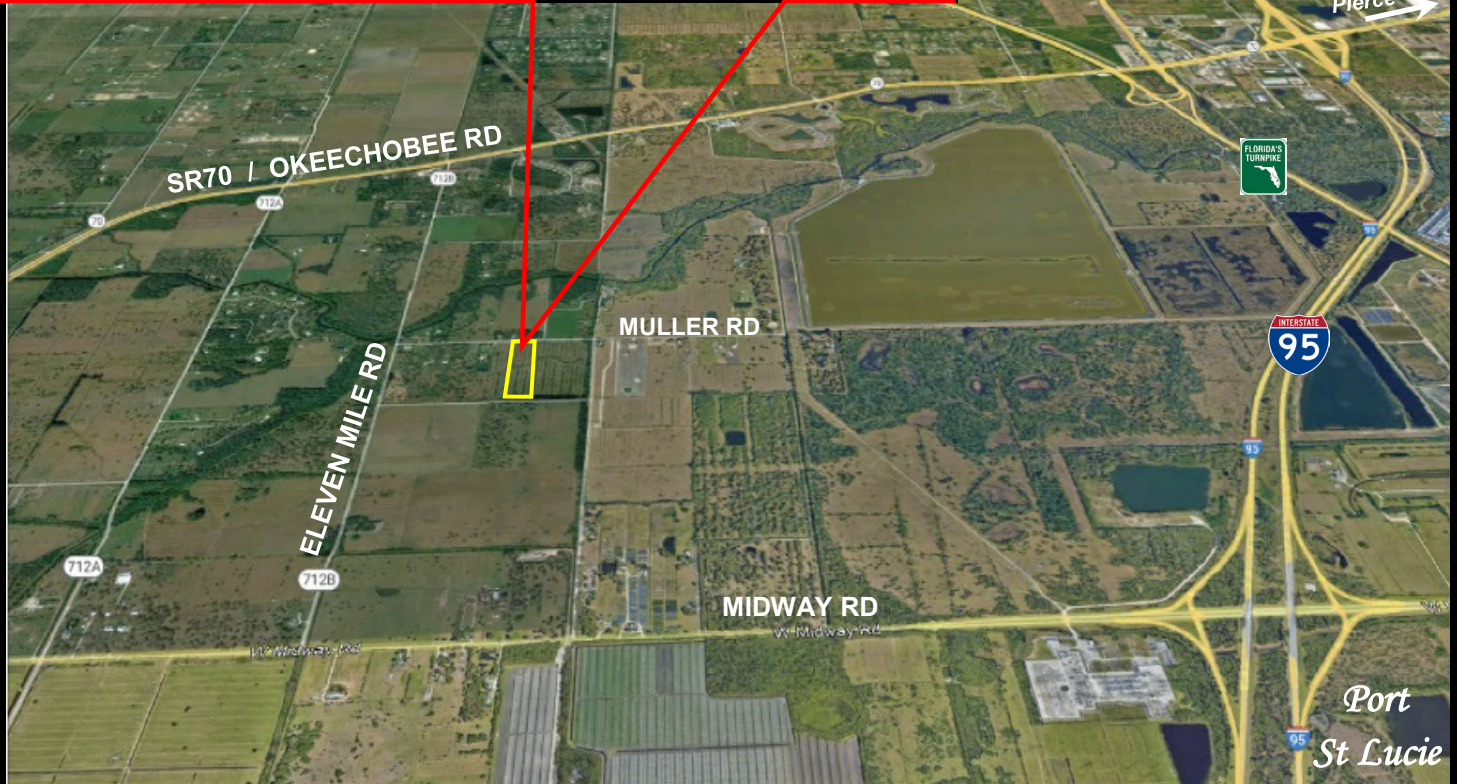


9.8 ac Lot

AG-2.5 Zoning

Muller Rd
Fort Pierce, FL 34945

Country Living without being remote. 8 minutes to I-95 and 15 minutes to Shopping: Downtown, St Lucie West or Tradition



- Platted Lot on Quiet, Dead-end Paved Road in Excellent Location
- 346.5' Paved Frontage on Muller Road by 1,237.8' deep
- Saint Lucie County Agricultural AG-2.5 Zoning
- MLS# RX-10847364; Lot 2 PID 2333-801-0002-000-2
- 2022 Taxes \$257.11 with Agricultural Exemption
- Convenient, quick access to SR70 / Okeechobee Rd, Midway Rd, I-95 and FL Turnpike

\$400,000.