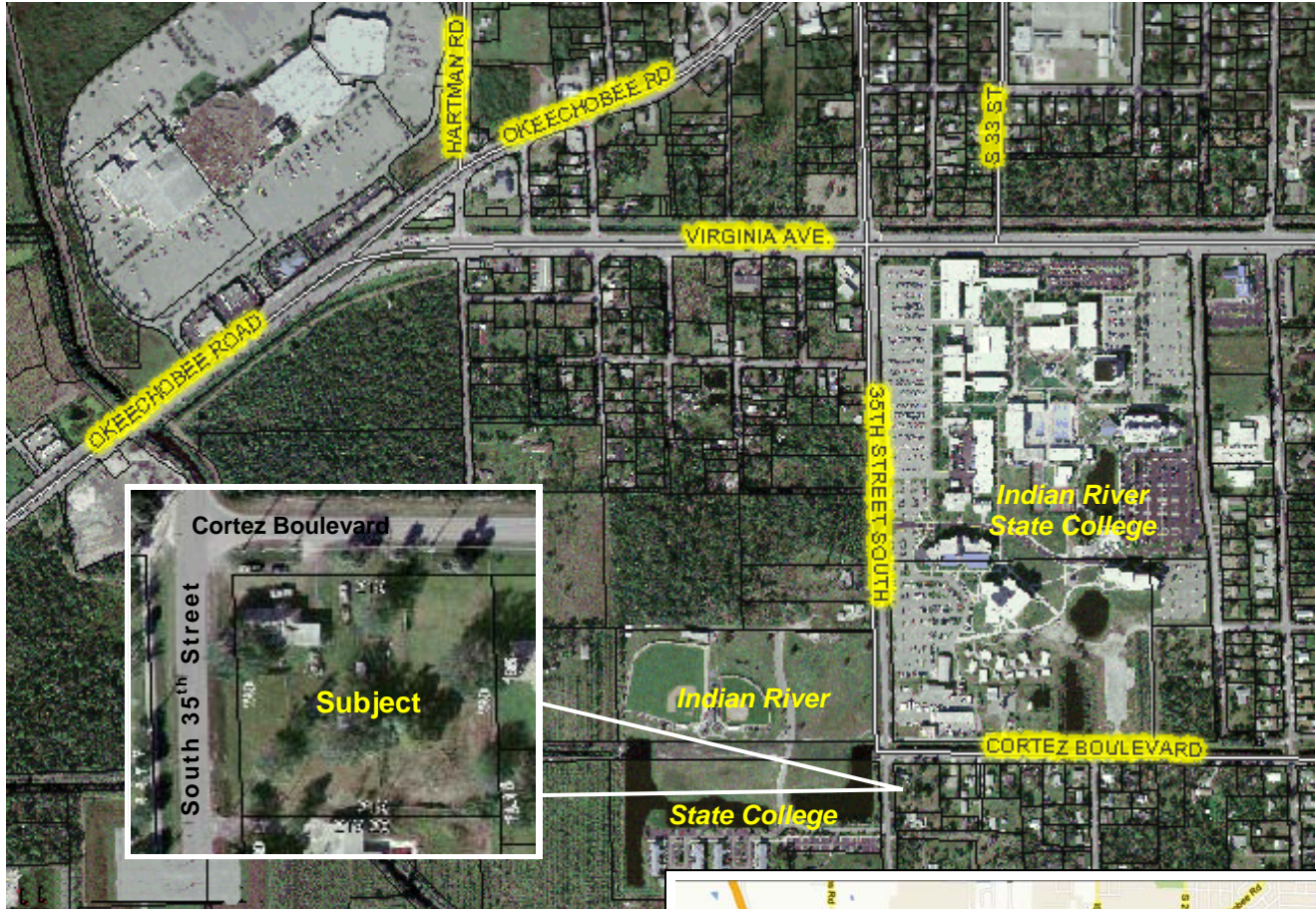


1.21ac Corner Parcel
3415 Cortez Blvd, Fort Pierce, Florida

Located Adjacent to Indian River State College



- Saint Lucie County RS-4 Zoning
- Up to 4 Dwelling Units per acre
- 219 ft Frontage on Cortez Blvd
- 240 ft Frontage on South 35th St
- 1935 Unoccupied Wood Frame House

\$96,000.

