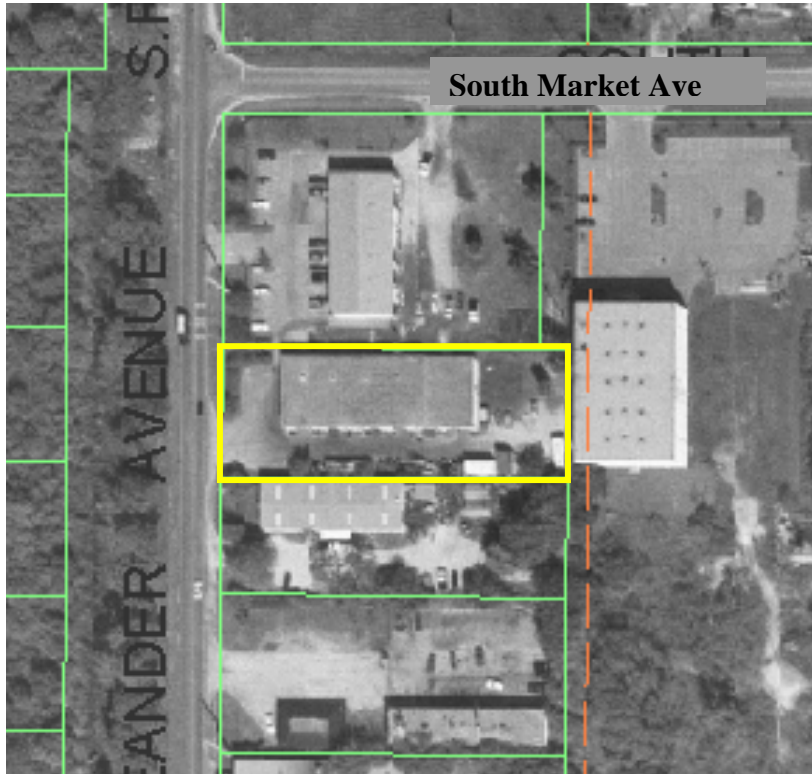


**9,600 sf Light Industrial Building on .72 ac
\$599,000**

3798 Oleander Avenue ~ Fort Pierce, Saint Lucie County, Florida

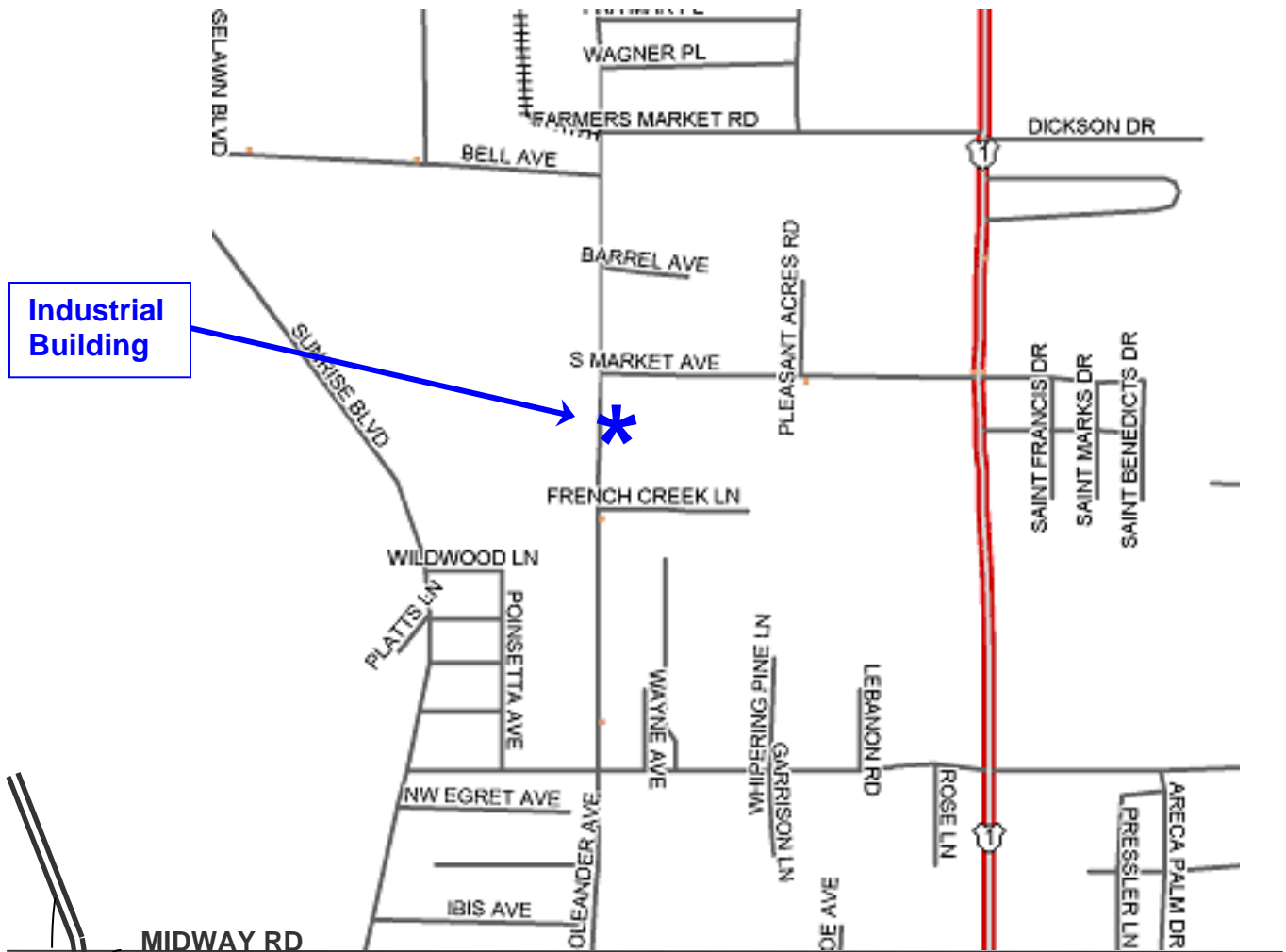


- CBS construction
- Roof: bar joist with concrete decking and tar & gravel
- 12' & 14' interior heights
- 4 - 10' x 10' & 1 - 10' x 12' roll-up door plus walk doors
- 3-Phase electric service
- East 3,100 sf fully A/C with dual zones
- West 6,500 sf warehouse with A/C office area
- Currently configured for two tenants

South side of building looking toward Oleander Ave.

**Call for
Additional
Details**





(Map NOT to scale)

I-95

Directions from I-95:

From Midway Road exit #126, go East 4 miles to Oleander Ave., turn left (North), and go 1.25 miles to building and sign on right side.