

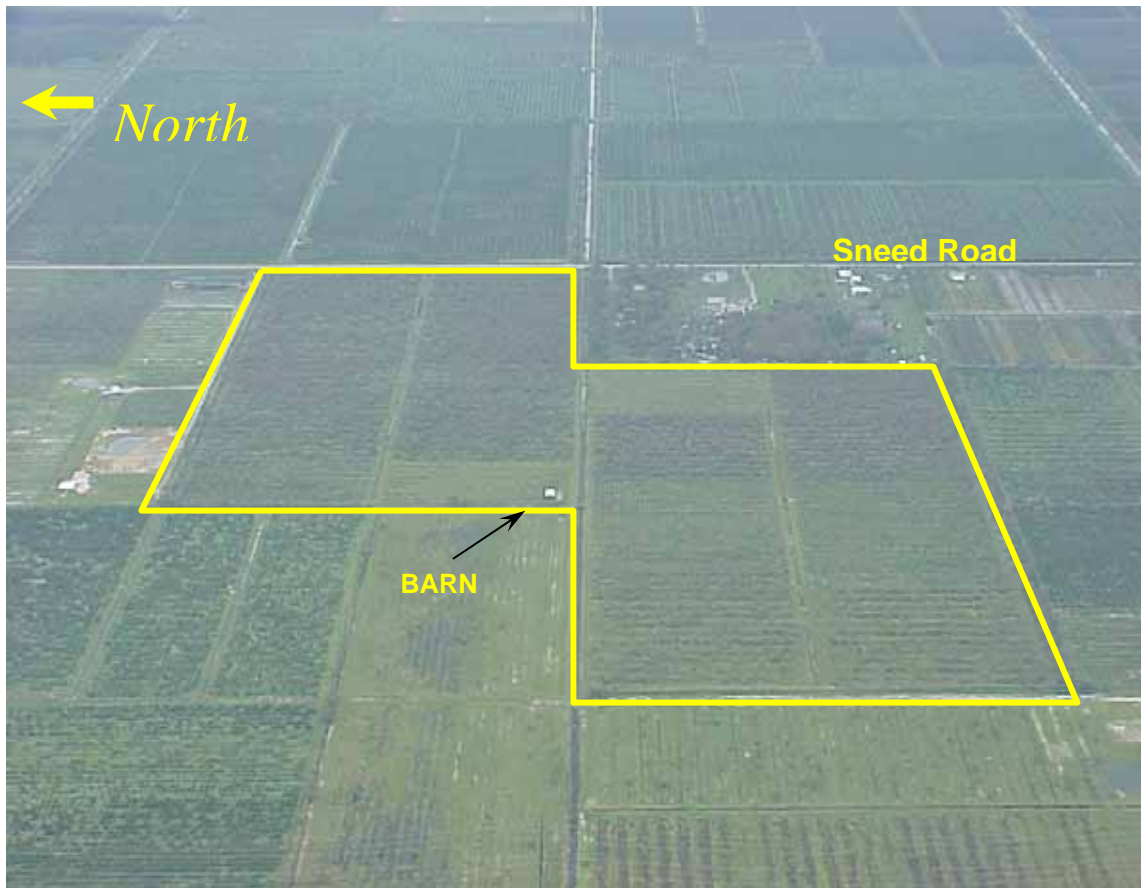


## 160 ac Tract

1,327 ft Paved Frontage on Sneed Road, Saint Lucie County, FL

**\$1,900,000.**

Land Use: AG-5 Zoning: 1 dwelling unit per 5 acres



**Barn and Two Artesian Wells**  
**Located in North Saint Lucie River Water Mgmt District**  
**Each Half – 1 / 4 mile x 1 / 2 mile+-**

[www.waltersco.com](http://www.waltersco.com) • e-mail: [mark@waltersco.com](mailto:mark@waltersco.com)  
2100 Sunrise Blvd, Suite C • Fort Pierce, FL 34950  
772) 468-8306 • fax (772) 465-6593  
FLAU1555AB1833



**Directions from the North:**

From I-95 take the SR68 (Orange Ave) West Exit. Go west 8 miles to Sneed Rd. Turn left & go south on Sneed Rd. 3 miles. Property & sign will be on your right (west side).

**Directions from the South:**

From I-95 take the Midway Rd exit (CR 712); turn left. Go west 4-1/2 miles to SR 70. Turn left & go west 2-3/4 miles to Sneed Rd. Turn right & go north on Sneed Road 2-1/2 miles. Property & sign will be on your left (west side).

